

Standing The Test of Time

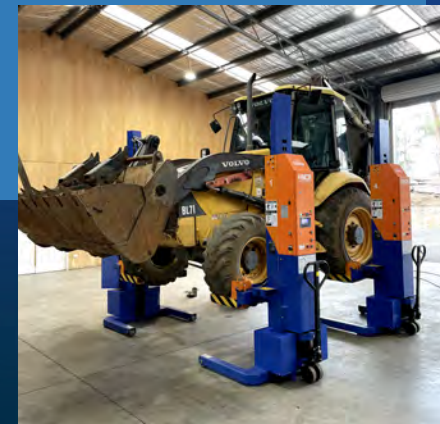
Heavy Vehicle Service Equipment

INCA mobile lifting columns are built to withstand the requirements of even the most demanding workshops and conditions. Our proven track record have shown that Inca provides.

Australian and New Zealand Compliance - INCA mobile lifting columns are compliant with AS/NZ 1418.9 and certified by Worksafe Australia.

Warranty and Support - INCA mobile lifting columns are backed by a 2-year warranty and asset lifetime support. The Inca team offers 3, 6 and 12 monthly servicing options to cater to all servicing requirements.

Our team is also available to provide remote assistance and support to keep you in operation.



Applications

- Trucking and Transport Industry
- Bus Industry
- Plant and Equipment Industry
- Heavy and Light vehicle Industry
- Heavy, Light and P&E Auxiliary Industries



For more information visit

www.incalifts.com
info@incalifts.com
 National sales 0414 124 594



Lift capacity: 7500 kg
Max. height: 1775 mm
Axle Stands



Lift capacity: 1200 kg
Power: 12V DC 1.8 kw
Max. Lifting height: 1800 mm
Battery Operated Power Train Lift



Canvas Protective Covers



SWL: 9000 kg
Forklift Lifting Kit



SWL: 9000 kg
Light Vehicle Adapter



SWL: 15000 kg
Trailer Bridge Lifting Kit





5,000kg 380v 3Phase Mechanical Mobile Lifting System



Specification

Power Voltage	380V
Operation Voltage	24V
Motor power	3kw
Length overall	1120mm
Width overall	1100mm
Height overall	2600mm
Lifting Height	1500mm
Lifting Speed	0.6m/min
Lifting Capacity	5000kg
Net weight	580kg



Safety - INCA QJZ 5.0 utilises high tensile brass and steel nut systems to ensure operator and asset safety in some of the toughest environments. The limit switch system ensures the operator is unable to raise or lower the QJZ 5.0 to an unsafe level.

Intuitive Usage - INCA QJZ 5.0 lifting systems are easy to maneuver utilising the pallet jack style handle with built in safety. Each column can be utilised to operate individually or the whole set with the touch of a button.



5,500kg 24v DC Wireless Mobile Lifting System



Safety - INCA KP-55T utilises hydraulic ram, ratchet locking system and the absence of cables ensure operator and asset safety in some of the harshest environments. The limit switch and synchronization system ensure the smooth and safe operation of the system.

Flexible Usage - Operate columns as individuals, couples, or a full set (4 or 6). Moveable forks/tines allow for use on a range of wheel sizes to meet most needs.

Intuitive Usage - INCA KP-55T lifting systems are easy to manoeuvre utilising the pallet jack style handle with built in safety. Each column can be utilised to operate the system.

Specification

Operation voltage	24V
Charging power	230V/1PH
Clearance from fork to column	236mm
Lifting / lowering time	75 / 60sec
Noise level	Max 70db(A)
Max. floor surface pressure (per front wheel)	3200kg
Max. distance between lifting columns	12m
Height overall	2250mm
Width overall	1120mm
Lifting height	1705mm
Lifting capacity	5500kg
Net weight	546kg



7,500kg 24v DC Wireless Mobile Lifting System



Specification

Operation voltage	24V
Charging power	230V/1PH
Clearance from fork to column	250mm
Lifting / lowering time	100 / 60sec
Noise level	Max 70db(A)
Max. floor surface pressure (per front wheel)	3200kg
Max. distance between lifting columns	12m
Height overall	2250mm
Width overall	1120mm
Lifting height	1700mm
Lifting capacity	7500kg
Net weight	700kg



Safety - INCA KP-75T utilises hydraulic ram, ratchet locking system and the absence of cables ensure operator and asset safety in some of the harshest environments. The limit switch and synchronization system ensure the smooth and safe operation of the system.

Flexible Usage - Operate columns as individuals, couples, or a full set (4 or 6). Moveable forks/tines allow for use on a range of wheel sizes to meet most needs.

Intuitive Usage - INCA KP-75T lifting systems are easy to manoeuvre utilising the pallet jack style handle with built in safety. Each column can be utilised to operate the system.